

İLİ : BARTIN  
İLÇESİ : AMASRA  
MAH./KÖY : KUM  
ADA/PARSEL NO : 329/14-15-16  
17-18-19-20-21

AMASRA BELEDİYESİ KUM MAHALLESİ  
1 NOLU DÜZENLEME SAHASI  
PARSELASYON PLANI



1/1000

E28C03B2A  
E28C03B2C

4 623 400

E28C03B1B

E28C03B1C

4 623 300

FUNDALIK  
KADASTRO HARİTESİ

449 000

449 100

DÜZENLEYEN

Finan ALI

Barınak Kadastro Mühendisi

Çalışma No: 5507

Diplome No: 9500AAE-15

Barınak M.B. No: 26090634789

ADI SOYADI

TARİH

İMZA

UYGUNDUR  
BELEDİYE/ÖZEL İDARE

KONTROL EDEN

ONAYLAYAN

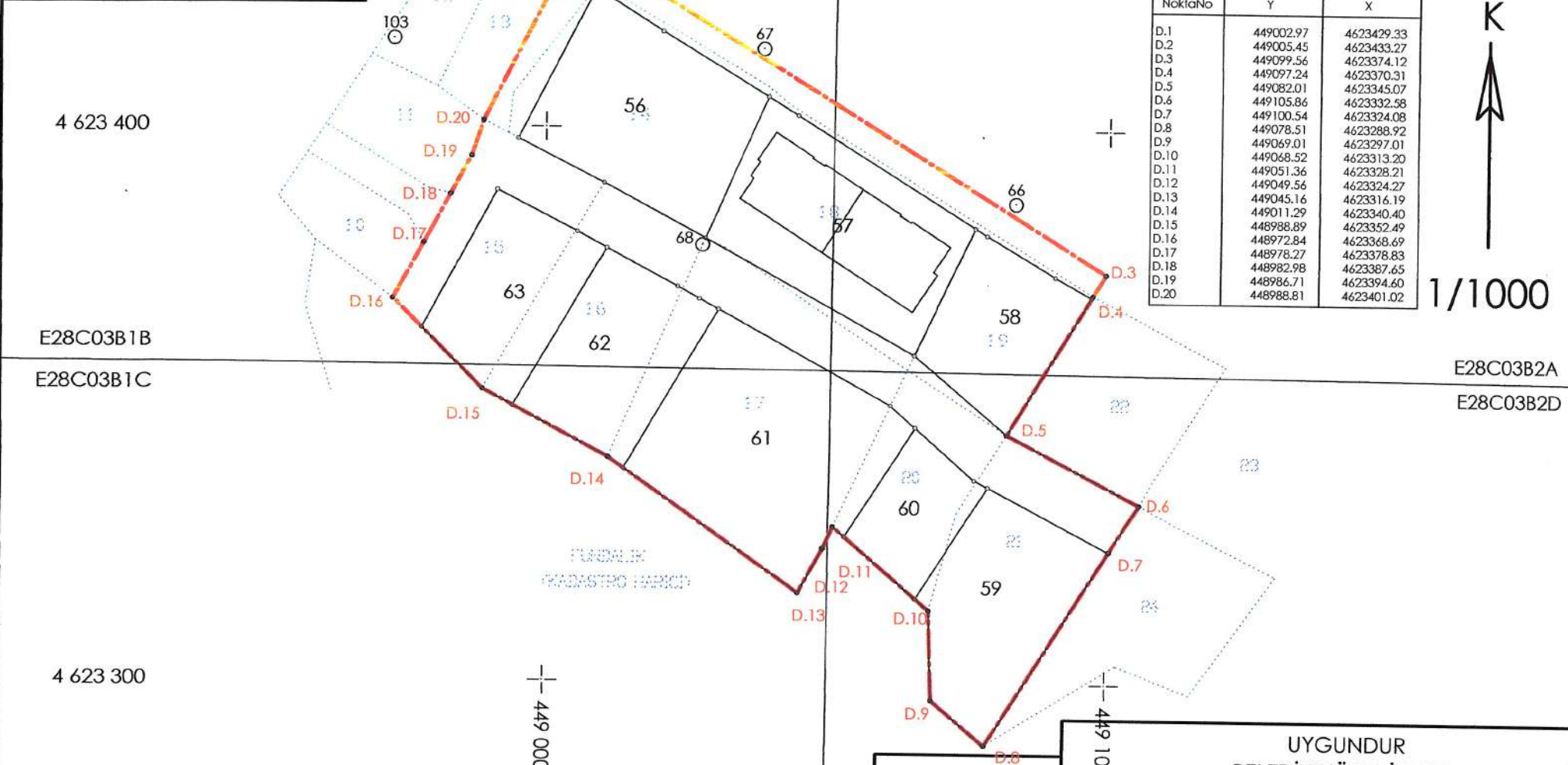
İli : BARTIN  
İLÇESİ : AMASRA  
MAH./KÖY : KUM  
ADA/PARSEL NO : 329/14-15-16  
17-18-19-20-21

AMASRA İLLEDİYESİ KUM MAHALLESİ  
1 NOLU DÜZENLEME SAHASI  
DÜZENLEME SINIR HARİTASI

NoktaNo	Y	X
D.1	449002.97	4623429.33
D.2	449005.45	4623433.27
D.3	449099.56	4623374.12
D.4	449097.24	4623370.31
D.5	449082.01	4623345.07
D.6	449105.86	4623332.58
D.7	449100.54	4623324.08
D.8	449078.51	4623288.92
D.9	449069.01	4623297.01
D.10	449068.52	4623313.20
D.11	449051.36	4623328.21
D.12	449049.56	4623324.27
D.13	449045.16	4623316.19
D.14	449011.29	4623340.40
D.15	448988.89	4623352.49
D.16	448972.84	4623368.69
D.17	448978.27	4623378.83
D.18	448982.98	4623387.65
D.19	448986.71	4623394.60
D.20	448988.81	4623401.02



1/1000



4 623 400

E28C03B1B

E28C03B1C

4 623 300

449 000

449 100

DÜZENLEYEN

UYGUNDUR  
BELEDİYE/ÖZEL İDARE

KONTROL EDEN

ONAYLAYAN

ADI SOYADI  
TARİH  
İMZA

SİNAN ALP  
Harita ve Kadastro Mühendisi  
Üda Sicil No: 5507  
Diploma No: 955 AAF-15  
Baro V.D. No: 20019034788

## KOORDINE ÖZET ÇİZELGESİ

Proje:KADASTRO

KOORDİNATLARI

Sayfa: 1

Nokta no	Koordineler			Kot Değeri		Zemin	Pafta no	DÜŞÜNCELER
	Hes Say	Y	X	Def	H			
P.66		449083.27	4623386.71					
P.67		449038.38	4623414.36					
P.68		449027.76	4623378.90					
P.100		448984.79	4623444.45					
P.103		448972.86	4623415.73					
3290050		449130.91	4623319.96					
3290052		449121.62	4623357.75					
3290053		449115.53	4623298.37					
3290055		449105.86	4623332.58					
3290057		449101.87	4623303.50					
3290058		449097.24	4623370.31					
3290059		449096.00	4623370.82					
3290060		449093.24	4623363.23					
3290061		449091.75	4623364.07					
3290062		449090.79	4623373.59					
3290063		449089.73	4623357.01					
3290064		449089.67	4623356.67					
3290065		449088.68	4623365.80					
3290067		449086.66	4623367.01					
3290068		449086.11	4623350.10					
3290069		449085.17	4623359.59					
3290070		449084.98	4623358.75					
3290071		449083.42	4623349.91					
3290072		449082.01	4623345.07					
3290073		449081.90	4623346.31					
3290074		449081.42	4623352.18					
3290075		449079.20	4623371.32					
3290077		449078.51	4623288.92					
3290078		449076.59	4623383.19					
3290079		449075.80	4623365.04					
3290080		449075.20	4623363.85					
3290081		449074.74	4623373.78					
3290082		449073.32	4623330.79					
3290083		449071.84	4623357.62					
3290084		449071.73	4623378.91					
3290085		449071.30	4623367.37					
3290086		449070.55	4623366.35					
3290087		449069.49	4623373.79					
3290088		449069.01	4623297.00					
3290089		449068.78	4623374.32					
3290090		449068.52	4623313.20					
3290091		449068.22	4623365.00					
3290092		449067.44	4623355.82					
3290093		449067.20	4623360.12					
3290096		449066.11	4623352.30					
3290097		449065.09	4623367.06					
3290098		449064.92	4623383.37					
3290099		449064.73	4623383.17					
3290100		449064.36	4623356.57					
3290101		449062.87	4623384.71					
3290103		449062.68	4623384.50					
3290104		449061.11	4623358.76					
3290108		449056.11	4623389.14					

Sinan Ali

Harita ve Kadastro Mühendisi

Oda Sicil No: 5507

Dünyada 15 ÇAAE-15

Eğitim V.D. No: 26059R479



## KOORDINE ÖZET ÇİZELGESİ

Proje:KADASTRO

KOORDİNATLARI

Sayfa: 2

Nokta no	Koordineler			Kot Değeri		Zemin	Pafta no	DÜŞÜNCELER
	Hes Say	Y	X	Def	H			
3290109		449051.36	4623328.21					
3290111		449049.56	4623324.27					
3290112		449049.40	4623393.53					
3290113		449049.26	4623393.31					
3290114		449048.88	4623377.66					
3290115		449047.32	4623394.89					
3290116		449047.30	4623394.86					
3290117		449047.16	4623394.64					
3290119		449045.16	4623316.19					
3290120		449042.72	4623404.50					
3290121		449040.60	4623399.29					
3290122		449039.85	4623407.08					
3290124		449037.80	4623393.96					
3290125		449037.36	4623394.34					
3290126		449036.66	4623390.98					
3290127		449036.15	4623391.43					
3290128		449034.19	4623387.27					
3290129		449031.77	4623378.41					
3290130		449031.54	4623405.52					
3290131		449029.95	4623401.61					
3290132		449029.54	4623401.83					
3290133		449028.38	4623380.30					
3290134		449028.28	4623380.07					
3290135		449027.07	4623392.07					
3290136		449027.03	4623388.16					
3290138		449025.48	4623389.07					
3290139		449025.32	4623416.06					
3290140		449025.27	4623393.04					
3290142		449023.55	4623381.81					
3290143		449016.40	4623413.91					
3290145		449014.41	4623410.26					
3290146		449013.95	4623410.47					
3290147		449011.29	4623340.40					
3290148		449010.33	4623389.89					
3290149		449009.23	4623401.93					
3290150		449008.99	4623425.76					
3290151		449007.46	4623403.00					
3290152		449005.79	4623400.04					
3290153		449004.26	4623400.90					
3290154		449002.97	4623429.33					
3290155		449000.72	4623394.54					
3290156		449000.66	4623424.85					
3290157		448994.26	4623435.51					
3290158		448994.06	4623405.94					
3290159		448993.25	4623398.72					
3290160		448992.26	4623430.83					
3290161		448992.22	4623407.98					
3290162		448991.66	4623430.83					
3290164		448989.01	4623432.56					
3290165		448988.89	4623352.49					
3290166		448988.81	4623401.02					
3290167		448988.62	4623433.71					
3290168		448987.21	4623400.73					

**SİNEM ALİ**  
 Harita ve Kadastro Mühendisi  
 Oda Sicil No: 5507  
 Oda No: 55-CAAF-15  
 Etiler V/D No: 26039634788

## KOORDİNE ÖZET ÇİZELGESİ

Proje:KADASTRO

KOORDİNATLARI

Sayfa: 3

Nokta no	Koordineler			Kot Değeri		Zemin	Pafta no	DÜŞÜNCELER
	Hes Say	Y	X	Def	H			
3290169		448986.71	4623394.60					
3290170		448985.69	4623397.09					
3290171		448985.59	4623435.63					
3290172		448985.12	4623397.50					
3290174		448984.45	4623435.49					
3290175		448984.39	4623442.82					
3290176		448983.93	4623414.07					
3290177		448982.98	4623387.65					
3290178		448982.39	4623415.81					
3290180		448981.87	4623391.04					
3290181		448980.55	4623407.00					
3290184		448979.11	4623388.58					
3290185		448978.46	4623419.41					
3290186		448978.27	4623378.82					
3290187		448977.97	4623418.66					
3290191		448976.11	4623422.53					
3290192		448976.03	4623421.90					
3290194		448975.49	4623383.77					
3290196		448974.77	4623421.78					
3290199		448972.84	4623368.69					
3290203		448971.73	4623411.27					
3290207		448969.65	4623408.05					
3290208		448969.03	4623408.41					
3290209		448968.90	4623412.73					
3290216		448965.21	4623402.24					
3290220		448962.03	4623351.94					
3290221		448960.89	4623400.04					
3290224		448959.18	4623379.05					
3290227		448957.70	4623394.96					
3290229		448957.41	4623367.35					
3290236		448952.64	4623386.92					

Sinan ALI

Harita ve Kadastro Mühendisi

Oda Sicil No: 5097

Diploma No: 05 BAAP 15

Çalışma V.D. No: 26039634788

## ALAN HESABI

NoktaNo	Y	X	NoktaNo	Y	X
3290122	449039.85	4623407.08	3290133	449028.38	4623380.30
3290134	449028.28	4623380.07	3290139	449025.32	4623416.06
3290148	449010.33	4623389.89	3290150	449008.99	4623425.76
3290158	448994.06	4623405.94	3290159	448993.25	4623398.72

Ada/Parsel	Noktalar	HesapAlan	Düzeltilme	Deng. Alan
329/14	3290122,3290133,3290134, 3290139,3290148,3290150, 3290158,3290159	1189.26	+0.00	1189.26
	TOPLAM	1189.26	+0.00	1189.26
TAPU ALANI		1189.26		
HESAPLANAN		1189.26		
FARK		0.00		
TECVİZ		9.56		

Sinan ALI  
Harita ve Kadastro Mühendisi  
Oda Sicil No: 5507  
Görev No: 95 CAAP-15  
Lisans No: 26039634788

## ALAN HESABI

NoktaNo	Y	X	NoktaNo	Y	X
3290148	449010.33	4623389.89	3290159	448993.25	4623398.72
3290165	448988.89	4623352.49	3290166	448988.81	4623401.02
3290169	448986.71	4623394.60	3290177	448982.98	4623387.65
3290186	448978.27	4623378.82	3290199	448972.84	4623368.69

Ada/Parsel	Noktalar	HesapAlan	Düzeltilme	Deng.Alan
329/15	3290148,3290159,3290165, 3290166,3290169,3290177, 3290186,3290199	893.21	+0.00	893.21
	TOPLAM	893.21	+0.00	893.21
TAPU ALANI	893.21			
HESAPLANAN	893.21			
FARK	0.00			
TECVİZ	8.27			

**Sinan ALP**  
Harita ve Kadastro Mühendisi  
Oda Etim No: 5593  
Diyadin No: 95-CAAF-15  
Barın V.D No: 26039634788

NoktaNo	Y	X	NoktaNo	Y	X
3290134	449028.28	4623380.07	3290147	449011.29	4623340.40
3290148	449010.33	4623389.89	3290165	448988.89	4623352.49

Ada/Parsel	Noktalar	HesapAlan	Düzeltilme	Deng.Alan
329/16	3290134,3290147,3290148, 3290165	988.14	+0.00	988.14
	TOPLAM	988.14	+0.00	988.14
TAPU ALANI		988.14		
HESAPLANAN		988.14		
FARK		0.00		
TECVİZ		8.74		

**Sinan ALP**  
Harita ve Kadastro Mühendisi  
Oda Sicil No: 5507  
Diploma No: 95-CAAF-15  
Barın V.D. No: 26039634788



## ALAN HESABI

NoktaNo	Y	X	NoktaNo	Y	X
3290100	449064.36	4623356.56	3290104	449061.11	4623358.76
3290109	449051.36	4623328.21	3290111	449049.56	4623324.27
3290119	449045.16	4623316.19	3290129	449031.77	4623378.41
3290134	449028.28	4623380.07	3290147	449011.29	4623340.40

Ada/Parsel	Noktalar	HesapAlan	Düzeltilme	Deng.Alan
329/17	3290100,3290104,3290109, 3290111,3290119,3290129, 3290134,3290147	1853.74	+0.00	1853.74
	TOPLAM	1853.74	+0.00	1853.74
TAPU ALANI	1853.74			
HESAPLANAN	1853.74			
FARK	0.00			
TECVİZ	12.22			

Sinan ALP  
Harita ve Kadastro Mühendisi  
Oda Sicil No: 5507  
Tic. Sicil No: 95/CAAF-15  
Barut YB No: 26039634789

## ALAN HESABI

NoktaNo	Y	X	NoktaNo	Y	X
3290078	449076.59	4623383.19	3290091	449068.22	4623365.00
3290100	449064.36	4623356.56	3290104	449061.11	4623358.76
3290120	449042.72	4623404.50	3290122	449039.85	4623407.08
3290129	449031.77	4623378.41	3290133	449028.38	4623380.30
3290134	449028.28	4623380.07			

Ada/Parse1	Noktalar	HesapAlan	Düzeltilme	Deng.Alan
329/18	3290078,3290091,3290100, 3290104,3290120,3290122, 3290129,3290133,3290134	1233.70	+0.00	1233.70
	TOPLAM	1233.70	+0.00	1233.70
TAPU ALANI		1233.70		
HESAPLANAN		1233.70		
FARK		0.00		
TECVİZ		9.73		

**WİTEN ALP**  
Harita ve Kadastro Mühendisi  
Oda Sicil No: 6507  
Diploma No: 05 044715  
Barın V.B. No: 26039634788

## ALAN HESABI

NoktaNo	Y	X	NoktaNo	Y	X
3290058	449097.24	4623370.31	3290072	449082.01	4623345.07
3290078	449076.59	4623383.19	3290091	449068.22	4623365.00
3290100	449064.36	4623356.56			

Ada/Parsel	Noktalar	HesapAlan	Düzeltilme	Deng. Alan
329/19	3290058, 3290072, 3290078, 3290091, 3290100	664.12	+0.00	664.12
	TOPLAM	664.12	+0.00	664.12
TAPU ALANI		664.12		
HESAPLANAN		664.12		
FARK		0.00		
TECVİZ		7.12		

Sinan ALP  
Harita ve Kadastro Mühendisi  
Oda Sicil No: 5567  
Diploma No: 05-CAAF-15  
Eğitim V.D. No: 26039634788

## ALAN HESABI

NoktaNo	Y	X	NoktaNo	Y	X
3290072	449082.01	4623345.07	3290082	449073.32	4623330.79
3290090	449068.52	4623313.20	3290100	449064.36	4623356.56
3290109	449051.36	4623328.21			

Ada/Parsel	Noktalar	HesapAlan	Düzeltilme	Deng.Alan
329/20	3290072,3290082,3290090, 3290100,3290109	657.55	+0.00	657.55
	TOPLAM	657.55	+0.00	657.55
TAPU ALANI		657.55		
HESAPLANAN		657.55		
FARK		0.00		
TECVİZ		7.09		

**Sinan ALI**  
Harita ve Kadastro Mühendisi  
Oda Sicil No: 5507  
Diploma No: 26039634788  
Cartin M.D. No: 26039634788



## ALAN HESABI

NoktaNo	Y	X	NoktaNo	Y	X
3290055	449105.86	4623332.58	3290072	449082.01	4623345.07
3290077	449078.51	4623288.92	3290082	449073.32	4623330.79
3290088	449069.01	4623297.01	3290090	449068.52	4623313.20

Ada/Parsel	Noktalar	HesapAlan	Düzeltilme	Deng.Alan
329/21	3290055,3290072,3290077, 3290082,3290088,3290090	1131.49	+0.00	1131.49
	TOPLAM	1131.49	+0.00	1131.49
TAPU ALANI		1131.49		
HESAPLANAN		1131.49		
FARK		0.00		
TECVİZ		9.33		

**DİNAN ALI**  
Harita ve Kadastro Mühendisi  
Oda Sicil No: 5507  
Diyadinin V.D. No: 26039634788

## KOORDİNE ÖZET ÇİZELGESİ

Proje:AMASRA

KUM MAH.PARSEL KOOR.

Sayfa: 1

Nokta no	Koordineler		Kot Değeri		Zemin	Pafta no	DÜŞÜNCELER
	Hes Say	Y	X	Def			
P.66		449083.27	4623386.71				
P.67		449038.38	4623414.36				
P.68		449027.76	4623378.90				
P.100		448984.79	4623444.45				
P.103		448972.86	4623415.73				
3290072		449082.01	4623345.07				
3290077		449078.51	4623288.92				
3290084		449071.73	4623378.91				
3290087		449069.49	4623373.79				
3290088		449069.01	4623297.00				
3290089		449068.78	4623374.32				
3290090		449068.52	4623313.20				
3290097		449065.09	4623367.06				
3290098		449064.92	4623383.37				
3290099		449064.73	4623383.17				
3290101		449062.87	4623384.71				
3290103		449062.68	4623384.50				
3290108		449056.11	4623389.14				
3290109		449051.36	4623328.21				
3290111		449049.56	4623324.27				
3290112		449049.40	4623393.53				
3290113		449049.26	4623393.31				
3290114		449048.88	4623377.66				
3290115		449047.32	4623394.89				
3290116		449047.30	4623394.86				
3290117		449047.16	4623394.64				
3290119		449045.16	4623316.19				
3290121		449040.60	4623399.29				
3290124		449037.80	4623393.96				
3290125		449037.36	4623394.34				
3290126		449036.66	4623390.98				
3290127		449036.15	4623391.43				
3290128		449034.19	4623387.27				
3290147		449011.29	4623340.40				
3290148		449010.33	4623389.89				
3290165		448988.89	4623352.49				
3290460		448995.03	4623397.81				
3290461		449008.65	4623425.04				
3290462		449020.55	4623417.35				
3290463		449039.25	4623405.68				
3290464		449044.59	4623402.34				
3290465		449076.15	4623382.25				
3290466		449078.24	4623380.92				
3290467		449090.53	4623373.53				
3290468		449097.00	4623369.90				
3290469		449065.58	4623359.22				
3290470		449028.28	4623380.07				
3290471		449030.69	4623367.26				
3290472		448994.31	4623349.56				
3290473		448978.00	4623363.48				
3290474		448991.35	4623388.45				
3290475		449005.63	4623381.06				
3290476		449010.87	4623378.19				
3290477		449023.49	4623371.29				
3290478		449027.35	4623369.13				
3290479		449061.39	4623350.10				
3290480		449065.82	4623346.15				
3290481		449076.36	4623336.74				
3290482		449078.77	4623335.48				
3290483		449100.54	4623324.08				
3290484		449066.13	4623315.29				
3290485		449014.04	4623338.43				
3290486		449053.46	4623326.38				

**SİNAN ALP**  
 Harita ve Kadastro Mühendisi  
 Oda Sicil No: 5307  
 Diploması No: 25-00007-15  
 Başvuru No: 26039684788

## ALAN HESABI

NoktaNo	Y	X	NoktaNo	Y	X
3290072	449082.01	4623345.07	3290073	448978.00	4623363.48
3290074	448991.35	4623388.45	3290075	449005.63	4623381.06
3290076	449011.58	4623377.80	3290077	449023.49	4623371.29
3290077	449078.51	4623288.92	3290078	449032.18	4623366.43
3290079	449061.39	4623350.10	3290080	449063.12	4623348.56
3290081	449076.36	4623336.74	3290082	449077.50	4623336.15
3290083	449100.54	4623324.08	3290084	449065.04	4623316.25
3290085	449015.42	4623337.45	3290086	448995.03	4623349.18
3290088	449069.01	4623297.01	3290090	449068.52	4623313.20
3290109	449051.36	4623328.21	3290111	449049.56	4623324.27
3290119	449045.16	4623316.19	3290147	449011.29	4623340.40
3290148	449010.33	4623389.89	3290165	448988.89	4623352.49
3290460	448995.03	4623397.81	3290461	449008.65	4623425.04
3290462	449020.55	4623417.35	3290463	449039.39	4623405.59
3290464	449044.59	4623402.34	3290465	449076.15	4623382.25
3290466	449078.24	4623380.92	3290467	449090.53	4623373.53
3290468	449097.00	4623369.90	3290469	449065.57	4623359.22
3290470	449028.33	4623380.04	3290471	449027.21	4623380.65

Ada/Parsele	Noktalar	HesapAlan	Düzeltilme	Deng.Alan
329/56	3290148,3290460,3290461, 3290462,3290463,3290471	1050.67	+0.00	1050.67
329/57	3290463,3290464,3290465, 3290469,3290470,3290471	1156.39	+0.00	1156.39
329/58	3290072,3290465,3290466, 3290467,3290468,3290469	612.88	+0.00	612.88
329/59	3290077,3290082,3290083, 3290084,3290088,3290090	890.20	+0.00	890.20
329/60	3290080,3290081,3290082, 3290084,3290109	426.95	+0.00	426.95
329/61	3290078,3290079,3290080, 3290085,3290109,3290111, 3290119	1272.67	+0.00	1272.67
329/62	3290076,3290077,3290078, 3290085,3290086,3290147	777.42	+0.00	777.42
329/63	3290073,3290074,3290075, 3290076,3290086,3290165	702.74	+0.00	702.74
	TOPLAM	6889.92	+0.00	6889.92
TAPU ALANI		6889.92		
HESAPLANAN		6889.92		
FARK		0.00		
TECVİZ		30.47		


  
**Sinan ALP**  
 Harita ve Kadastro Mühendisi  
 Çeşitli Sicil No: 5507  
 Çeşitli No: 15-CAAF-15  
 Çeşitli V.D No: 26039634788



TOPLAM ALAN : 8611.21 TOPLAM PAY : 8611.21 TOPLAM KAMULAŞTIRMA : 0.00 TOP. DÜZENLE. GİRMEYEN: 0.00 TOP. DÜZENLEMEYE GİREN: 8747.33				KADASTRO KAYITLARI ÖZETİ			SAYFA NO: 1 İLİ :BARTIN İLÇESİ :AMASRA KÖY/MAH. :KUM		
SNo	Pafta	Ada/Par	Alan	Hisse	Malik	Babası	Pay	Cinsi	
1	E28C03B1B	329/14	1189.26	4/108	GÜLSÜM SALMAN	MUSTAFA	44.05	TARLA	
2	E28C03B1B	329/14	1189.26	2/108	VEDAT AKTAŞ	MUZAFFER	22.02	TARLA	
3	E28C03B1B	329/14	1189.26	2/108	HANİFE ÖZDAL	MUZAFFER	22.02	TARLA	
4	E28C03B1B	329/14	1189.26	6/108	ŞABAN YILDIZ	MEHMET	66.07	TARLA	
5	E28C03B1B	329/14	1189.26	6/108	HASAN ÇAPKAN	HÜSEYİN	66.07	TARLA	
6	E28C03B1B	329/14	1189.26	5/108	BUKET AYDOĞAN	HARUN	55.06	TARLA	
7	E28C03B1B	329/14	1189.26	5/108	SATILMIŞ ÖZSOY	MEHMET	55.06	TARLA	
8	E28C03B1B	329/14	1189.26	6/108	BAYRAM KARABACAK	MUHİTTİN	66.07	TARLA	
9	E28C03B1B	329/14	1189.26	6/108	FATMA MEHLİKA ÖZCAN	DAVUT	66.07	TARLA	
10	E28C03B1B	329/14	1189.26	14/324	SEVDA İNAN	BEKİR	51.39	TARLA	
11	E28C03B1B	329/14	1189.26	7/324	SEVİNÇ YILDIRIM	BEKİR	25.69	TARLA	
12	E28C03B1B	329/14	1189.26	6/108	AYHAN SERAP YÜREKTÜRK	RIFAT	66.07	TARLA	
13	E28C03B1B	329/14	1189.26	7/108	ÖMER DEMİR	ÇOŞKUN	77.08	TARLA	
14	E28C03B1B	329/14	1189.26	7/108	NİHAL ERGÜDEN	MUSTAFA	77.08	TARLA	
15	E28C03B1B	329/14	1189.26	6/108	İBRAHİM UZUN	ALİ	66.07	TARLA	
16	E28C03B1B	329/14	1189.26	6/108	HAYDAR ÇOŞKUN	HAYDAR	66.07	TARLA	
17	E28C03B1B	329/14	1189.26	7/108	HAFİZE KAYA	SÜLEYMAN	77.08	TARLA	
18	E28C03B1B	329/14	1189.26	7/108	FEHMİ DERİŞ	SÜLEYMAN SAMİ	77.08	TARLA	
19	E28C03B1B	329/14	1189.26	7/108	REYHAN ÇAKAR	RIFAT	77.08	TARLA	
20	E28C03B1B	329/14	1189.26	6/108	CEVDET ESENYURT	DURSUN	66.07	TARLA	
21	E28C03B1B	329/15	893.21	TAM	SAVAŞ İPEK	SELAMİ	893.21	TARLA	
22	E28C03B1B	329/16	988.14	TAM	GÖNÜL BIÇAKCI ÖMER DEMİR [vrs.] ÇOŞKUN NİHAL ERGÜDEN [vrs.] MUSTAFA	ÇOŞKUN	988.14	TARLA	
23	E28C03B1B	329/17	1853.74	TAM	HAYRETİN İŞIKALTIN	SELAHATTİN	1853.74	TARLA	
24	E28C03B1B	329/18	1233.70	65/1420	HANIM AYSAY	NEVZAT	56.46	İKİ ADET KARGIR ALTI KATLI BİNA VE ARSASI	
25	E28C03B1B	329/18	1233.70	35/1420	UMUT GÜLER	MEHMET	30.41	İKİ ADET KARGIR ALTI KATLI BİNA VE ARSASI	
26	E28C03B1B	329/18	1233.70	35/1420	GÜLCAN GÜLER	RAMAZAN	30.41	İKİ ADET KARGIR ALTI KATLI BİNA VE ARSASI	
27	E28C03B1B	329/18	1233.70	65/1420	BANU ERMİŞ	HASAN BASRI	56.47	İKİ ADET KARGIR ALTI KATLI BİNA VE ARSASI	
28	E28C03B1B	329/18	1233.70	70/1420	SEMİRA BALTACI	HÜSEYİN	60.82	İKİ ADET KARGIR ALTI KATLI BİNA VE ARSASI	
29	E28C03B1B	329/18	1233.70	65/2840	FEHİM BEKMEZCİ	RECEP	28.24	İKİ ADET KARGIR ALTI KATLI BİNA VE ARSASI	
30	E28C03B1B	329/18	1233.70	65/2840	NAHİDE BEKMEZCİ	KAZIM	28.24	İKİ ADET KARGIR ALTI KATLI BİNA VE ARSASI	
31	E28C03B1B	329/18	1233.70	70/1420	MELAHAT ARSLAN	HÜSEYİN	60.82	İKİ ADET KARGIR ALTI KATLI BİNA VE ARSASI	
32	E28C03B1B	329/18	1233.70	65/1420	CÜNEYT KARACA	CEMİL	56.47	İKİ ADET KARGIR ALTI KATLI BİNA VE ARSASI	
33	E28C03B1B	329/18	1233.70	70/1420	MELAHAT TUNCAY	İSMAIL	60.82	İKİ ADET KARGIR ALTI KATLI BİNA VE ARSASI	
34	E28C03B1B	329/18	1233.70	65/1420	ENGİN UZUN	ALAEDDİN	56.47	İKİ ADET KARGIR ALTI KATLI BİNA VE ARSASI	
35	E28C03B1B	329/18	1233.70	35/1420	MUSTAFA KAZANCI	YALÇIN	30.41	İKİ ADET KARGIR ALTI KATLI BİNA VE ARSASI	
36	E28C03B1B	329/18	1233.70	35/1420	ELİF KAZANCI	BAHTİYAR	30.41	İKİ ADET KARGIR ALTI KATLI BİNA VE ARSASI	
37	E28C03B1B	329/18	1233.70	65/1420	GÖKHAN TUŞ	YAKUP	56.47	İKİ ADET KARGIR ALTI KATLI BİNA VE ARSASI	
38	E28C03B1B	329/18	1233.70	55/2840	SANIYE SARI	YAŞAR	23.89	İKİ ADET KARGIR ALTI KATLI BİNA VE ARSASI	
39	E28C03B1B	329/18	1233.70	55/2840	MAHSUN BAYRAK	RAMAZAN	23.89	İKİ ADET KARGIR ALTI KATLI BİNA VE ARSASI	
40	E28C03B1B	329/18	1233.70	65/1420	SEDA YENİ ZOR	HÜSEYİN	56.47	İKİ ADET KARGIR ALTI KATLI BİNA VE ARSASI	
41	E28C03B1B	329/18	1233.70	60/1420	ZEYNEP GÜRPINAR	AHMET	52.13	İKİ ADET KARGIR ALTI KATLI BİNA VE ARSASI	

**Sinan ALP**  
Harita ve Kadastro Mühendisi  
Orta Sicil No: 5007  
Dünya No: 95-CAAF-15  
Ertin V.D. No: 20039634788



SNo	Pafta	Ada/Par	Alan	Hisse	Malik	Babası	Pay	Cinsi
42	E28C03B1B	329/18	1233.70	65/1420	ZÜLALİ ÖZTÜRK	MURAT	56.47	İKİ ADET KARGIR ALTI KATLI BİNA VE ARSASI
43	E28C03B1B	329/18	1233.70	60/1420	ALİ EKBER DOĞAN	HÜSEYİN	52.13	İKİ ADET KARGIR ALTI KATLI BİNA VE ARSASI
44	E28C03B1B	329/18	1233.70	65/1420	AHMET BULUT	KAZIM	56.47	İKİ ADET KARGIR ALTI KATLI BİNA VE ARSASI
45	E28C03B1B	329/18	1233.70	60/1420	ÇİĞDEM ÖZTÜRK	NURETTİN	52.13	İKİ ADET KARGIR ALTI KATLI BİNA VE ARSASI
46	E28C03B1B	329/18	1233.70	65/1420	ÖZDEN EMİR	MUSTAFA	56.47	İKİ ADET KARGIR ALTI KATLI BİNA VE ARSASI
47	E28C03B1B	329/18	1233.70	60/1420	FATMA ATASOY	İSMAIL	52.13	İKİ ADET KARGIR ALTI KATLI BİNA VE ARSASI
48	E28C03B1B	329/18	1233.70	65/1420	NURDAGÜL ŞEN	MUHAMMED	56.47	İKİ ADET KARGIR ALTI KATLI BİNA VE ARSASI
49	E28C03B1B	329/18	1233.70	60/1420	KAMURAN KABADAYI	NECATİ	52.13	İKİ ADET KARGIR ALTI KATLI BİNA VE ARSASI
50	E28C03B1B	329/19	664.12	TAM	KARDEMİR DEMİR ÇELİK SAN.VE TİC.A.Ş.		664.12	TARLA
51	E28C03B1B	329/20	657.55	TAM	KARDEMİR DEMİR ÇELİK SAN.VE TİC.A.Ş.		657.55	TARLA
52	E28C03B1B	329/21	1131.49	64/384	AHMET ÇEKİCİ	MEHMET	188.57	TARLA
53	E28C03B1B	329/21	1131.49	64/384	MAKBULE	HASAN	188.58	TARLA
54	E28C03B1B	329/21	1131.49	16/384	ZELİHA HİKMET	İBRAHİM	47.15	TARLA
55	E28C03B1B	329/21	1131.49	16/384	EMİNE NİGAR	İBRAHİM	47.15	TARLA
56	E28C03B1B	329/21	1131.49	16/384	FATMA NURİYE	İBRAHİM	47.15	TARLA
57	E28C03B1B	329/21	1131.49	16/384	HASAN RIZA	İBRAHİM	47.15	TARLA
58	E28C03B1B	329/21	1131.49	1/2	KARDEMİR DEMİR ÇELİK SAN.VE TİC.A.Ş.		565.74	TARLA

**Sinan ALI\***  
 Harita ve Kadastro Mühendisi  
 Oda Sicil No: 5507  
 Diploma No: 95-CAAF-15  
 Bartın V.D. No: 26039634788

Toplam Tahsis	=	6889.92				
Toplam İmar Ada Alanı	=	6889.92				
Toplam Ortak Katılım Alanı	=	0.00				
Toplam Düzenlemeye Giren (Dopal)	=	8747.33				
Toplam Düzenlemeye Giren (Dopalma)	=	0.00				
Toplam Kamulaştırılan Alan	=	0.00				
Toplam Bağışlanan Alan	=	0.00				
Toplam Kadastro Parsel Alanı	=	8611.21				
Toplam Pay	=	8611.21				
<hr/>						
Ortak Katılım Oranı	=	0.0000000				
Düzenleme Ortaklık Payı Oranı (DOPO)	=	0.2123402				
DOPO (OKO ile birlikte)	=	0.2123402				
<hr/>						
Düzenleme Ortaklık Payı Hesabı						
Kamuya Ayrılan Alan	=	8747.33	-	6889.92	=	1857.41
Düzenleme Ortaklık Payı	=	1857.41	/	8747.33	=	0.2123402

**Sinan ALI\***  
Harita ve Kadastro Mühendisi  
Oda Sicil No: 5507  
Diploma No: 05/20AF-15  
Barın V.D. No: 26039634788



TOPLAM ALAN : 8611.21  
TOPLAM PAY : 8611.21  
TOPLAM KAMULAŞTIRMA : 0.00  
TOP. DÜZENLE. GİRMEYEN: 0.00  
TOP. DÜZENLEMeye GİREN: 8747.33

MAL SAHİPLERİ ARAŞTIRMA  
VE  
ÖZET FORMU  
( KADASTRO PARSELİNE SIRALI )

SAYFA NO: 1

TOPLAM ADA ALANI : 6889.92  
O.KATILIM ORANI : 0.0000000  
D.O.PAYI ORANI : 0.2123402

K A D A S T R O							İ M A R						
SNo	Pafta	Ada/Par	Aln/Pay	Hisse	Malik/Baba Adı	Kamu	Dop/İth	Ada/Par	Alan	Hisse	Pay	Eksik aldığı Alan	Fazla Aldığı Alan
1	E28C03B1B	329/14	1189.26 44.05	4 108	GÜLSÜM SALMAN MUSTAFA	-	10.43 38.67	329/56	1065.25	3945/106525	39.45	-	0.78
2	E28C03B1B	329/14	1189.26 22.02	2 108	VEDAT AKTAŞ MUZAFFER	-	5.22 19.33	329/56	1065.25	1973/106525	19.73	-	0.40
3	E28C03B1B	329/14	1189.26 22.02	2 108	HANİFE ÖZDAL MUZAFFER	-	5.22 19.33	329/56	1065.25	1973/106525	19.73	-	0.40
4	E28C03B1B	329/14	1189.26 66.07	6 108	ŞABAN YILDIZ MEHMET	-	15.64 58.00	329/56	1065.25	5918/106525	59.18	-	1.18
5	E28C03B1B	329/14	1189.26 66.07	6 108	HASAN ÇAPKAN HÜSEYİN	-	15.64 58.00	329/56	1065.25	5918/106525	59.18	-	1.18
6	E28C03B1B	329/14	1189.26 55.06	5 108	BUKET AYDOĞAN HARUN	-	13.03 48.33	329/56	1065.25	4932/106525	49.32	-	0.99
7	E28C03B1B	329/14	1189.26 55.06	5 108	SATILMIŞ ÖZSOY MEHMET	-	13.03 48.33	329/56	1065.25	4932/106525	49.32	-	0.99
8	E28C03B1B	329/14	1189.26 66.07	6 108	BAYRAM KARABACAK MUHİTTİN	-	15.64 57.99	329/56	1065.25	5918/106525	59.18	-	1.19
9	E28C03B1B	329/14	1189.26 66.07	6 108	FATMA MEHLİKA ÖZCAN DAVUT	-	15.63 58.00	329/56	1065.25	5918/106525	59.18	-	1.18
10	E28C03B1B	329/14	1189.26 51.39	14 324	SEVDA İNAN BEKİR	-	12.16 45.11	329/56	1065.25	4603/106525	46.03	-	0.92
11	E28C03B1B	329/14	1189.26 25.69	7 324	SEVİNÇ YILDIRIM BEKİR	-	6.07 22.56	329/56	1065.25	2301/106525	23.01	-	0.45
12	E28C03B1B	329/14	1189.26	6	AYHAN SERAP YÜREKTÜRK	-	15.63	329/56	1065.25	5918/106525	59.18	-	1.18

Sinan ALP  
Harita ve Kadastro Mühendisi  
Oda Sicil No: 5507  
Eğilim No: 95-CAAF-15  
Barın V.D. No: 2603963478c



K A D A S T R O				İ M A R									
SNo	Pafta	Ada/Par	Aln/Pay	Hisse	Malik/Baba Adı	Kamu	Dop/lth	Ada/Par	Alan	Hisse	Pay	Eksik aldığı Alan	Fazla Aldığı Alan
			66.07	108	RIFAT		58.00						
13	E28C03B1B	329/14	1189.26 77.08	7 108	ÖMER DEMİR COŞKUN	-	18.24 67.66	329/56	1065.25	6904/106525	69.04	-	1.38
14	E28C03B1B	329/14	1189.26 77.08	7 108	NİHAL ERGÜDEN MUSTAFA	-	18.24 67.66	329/56	1065.25	6904/106525	69.04	-	1.38
15	E28C03B1B	329/14	1189.26 66.07	6 108	İBRAHİM UZUN ALİ	-	15.63 58.00	329/56	1065.25	5918/106525	59.18	-	1.18
16	E28C03B1B	329/14	1189.26 66.07	6 108	HAYDAR COŞKUN HAYDAR	-	15.63 58.00	329/56	1065.25	5918/106525	59.18	-	1.18
17	E28C03B1B	329/14	1189.26 77.08	7 108	HAFİZE KAYA SÜLEYMAN	-	18.24 67.66	329/56	1065.25	6904/106525	69.04	-	1.38
18	E28C03B1B	329/14	1189.26 77.08	7 108	FEHMİ DERİŞ SÜLEYMAN SAMİ	-	18.24 67.66	329/56	1065.25	6904/106525	69.04	-	1.38
19	E28C03B1B	329/14	1189.26 77.08	7 108	REYHAN ÇAKAR RIFAT	-	18.24 67.66	329/56	1065.25	6904/106525	69.04	-	1.38
20	E28C03B1B	329/14	1189.26 66.07	6 108	CEVDET ESENYURT DURSUN	-	15.63 58.00	329/56	1065.25	5918/106525	59.18	-	1.18
21	E28C03B1B	329/15	893.21 893.21	TAM	SAVAŞ İPEK SELAMİ	-	189.66 703.55	329/63	675.93	TAM	675.93	27.62	
22	E28C03B1B	329/16	988.14 988.14	TAM	GÖNÜL BIÇAKCI COŞKUN ÖMER DEMİR [Vrs.] COŞKUN NİHAL ERGÜDEN [Vrs.] MUSTAFA	-	209.82 778.32	329/62	747.76	TAM	747.76	30.56	-

TOPLAM ALAN : 8611.21  
 TOPLAM PAY : 8611.21  
 TOPLAM KAMULAŞTIRMA : 0.00  
 TOP. DÜZENLE. GİRMEYEN: 0.00  
 TOP. DÜZENLEMeye GİREN: 8747.33

MAL SAHİPLERİ ARAŞTIRMA  
 VE  
 ÖZET FORMU  
 ( KADASTRO PARSELİNE SIRALI )

SAYFA NO: 2

TOPLAM ADA ALANI : 6889.92  
 O.KATILIM ORANI : 0.0000000  
 D.O.PAYI ORANI : 0.2123402

Sinan ALI

Arıtma ve Kadastro Mühendisi

Ortak Sicil No: 5507

Diploma No: 95-GAAF-15

Bartın V.D. No: 26030634788

K A D A S T R O				İ M A R									
SNo	Pafta	Ada/Par	Aln/Pay	Hisse	Malik/Baba Adı	Kamu	Dop/İth	Ada/Par	Alan	Hisse	Pay	Eksik aldığı Alan	Fazla Aldığı Alan
23	E28C03B1B	329/17	1853.74 1853.74	TAM	HAYRETTİN İŞKALTIN SELAHATTİN	-	393.63 1460.11	329/61	1402.78	TAM	1402.78	57.33	-
24	E28C03B1B	329/18	1233.70 56.46	65 1420	HANIM AYSAY NEVZAT	-	11.98 44.48	329/57	1141.81	5227/114181	52.27	-	7.79
25	E28C03B1B	329/18	1233.70 30.41	35 1420	UMUT GÜLER MEHMET	-	6.45 23.96	329/57	1141.81	2814/114181	28.14	-	4.18
26	E28C03B1B	329/18	1233.70 30.41	35 1420	GÜLCAN GÜLER RAMAZAN	-	6.45 23.96	329/57	1141.81	2814/114181	28.14	-	4.18
27	E28C03B1B	329/18	1233.70 56.47	65 1420	BANU ERMİŞ HASAN BASRİ	-	11.99 44.48	329/57	1141.81	5227/114181	52.27	-	7.79
28	E28C03B1B	329/18	1233.70 60.82	70 1420	SEMİRA BALTACI HÜSEYİN	-	12.91 47.91	329/57	1141.81	5629/114181	56.29	-	8.38
29	E28C03B1B	329/18	1233.70 28.24	65 2840	FEHİM BEKMEZCİ RECEP	-	5.99 22.25	329/57	1141.81	2613/114181	26.13	-	3.88
30	E28C03B1B	329/18	1233.70 28.24	65 2840	NAHİDE BEKMEZCİ KAZIM	-	5.99 22.25	329/57	1141.81	2613/114181	26.13	-	3.88
31	E28C03B1B	329/18	1233.70 60.82	70 1420	MELAHAT ARSLAN HÜSEYİN	-	12.91 47.91	329/57	1141.81	5629/114181	56.29	-	8.38
32	E28C03B1B	329/18	1233.70 56.47	65 1420	CÜNEYT KARACA CEMİL	-	11.99 44.48	329/57	1141.81	5227/114181	52.27	-	7.79
33	E28C03B1B	329/18	1233.70 60.82	70 1420	MELAHAT TUNCAY İSMAİL	-	12.91 47.91	329/57	1141.81	5629/114181	56.29	-	8.38

TOPLAM ALAN : 8611.21  
TOPLAM PAY : 8611.21  
TOPLAM KAMULAŞTIRMA : 0.00  
TOP. DÜZENLE GİRMEYEN: 0.00  
TOP. DÜZENLEMeye GİREN: 8747.33

MAL SAHİPLERİ ARAŞTIRMA  
VE  
ÖZET FORMU  
( KADASTRO PARSELİNE SIRALI )

SAYFA NO: 3

TOPLAM ADA ALANI : 6889.92  
O.KATILIM ORANI : 0.0000000  
D.O.PAYI ORANI : 0.2123402

İlhan ALK  
Harita ve Kadastro Mühendisi  
Oda Sicil No: 5507  
Diploma No: 95-CAAF-15  
Bartın V.D. No: 28099034790

K A D A S T R O				İ M A R										
SNo	Pafta	Ada/Par	Aln/Pay	Hisse	Malik/Baba Adı	Kamu	Dop/İth	Ada/Par	Alan	Hisse	Pay	Eksik aldığı Alan	Fazla Aldığı Alan	
34	E28C03B1B	329/18	1233.70 56.47	65 1420	ENGİN UZUN ALAEDDİN	-	11.99 44.48	329/57	1141.81	5227/114181	52.27			
35	E28C03B1B	329/18	1233.70 30.41	35 1420	MUSTAFA KAZANCI YALÇIN	-	6.45 23.96	329/57	1141.81	2814/114181	28.14			
36	E28C03B1B	329/18	1233.70 30.41	35 1420	ELİF KAZANCI BAHTİYAR	-	6.45 23.96	329/57	1141.81	2814/114181	28.14			
37	E28C03B1B	329/18	1233.70 56.47	65 1420	GÖKHANTUŞ YAKUP	-	12.00 44.47	329/57	1141.81	5227/114181	52.27			
38	E28C03B1B	329/18	1233.70 23.89	55 2840	SANIYE SARI YAŞAR	-	5.08 18.81	329/57	1141.81	2211/114181	22.11			
39	E28C03B1B	329/18	1233.70 23.89	55 2840	MAHSUN BAYRAK RAMAZAN	-	5.08 18.81	329/57	1141.81	2211/114181	22.11			
40	E28C03B1B	329/18	1233.70 56.47	65 1420	SEDA YENİ ZOR HÜSEYİN	-	12.00 44.47	329/57	1141.81	5227/114181	52.27			
41	E28C03B1B	329/18	1233.70 52.13	60 1420	ZEYNEP GÜRPINAR AHMET	-	11.07 41.06	329/57	1141.81	4825/114181	48.25			
42	E28C03B1B	329/18	1233.70 56.47	65 1420	ZÜLALİ ÖZTÜRK MURAT	-	12.00 44.47	329/57	1141.81	5227/114181	52.27			
43	E28C03B1B	329/18	1233.70 52.13	60 1420	ALİ EKBER DOĞAN HÜSEYİN	-	11.07 41.06	329/57	1141.81	4825/114181	48.25			
44	E28C03B1B	329/18	1233.70 56.47	65 1420	AHMET BULUT KAZIM	-	12.00 44.47	329/57	1141.81	5227/114181	52.27			

TOPLAM ALAN : 8611.21  
TOPLAM PAY : 8611.21  
TOPLAM KAMULAŞTIRMA : 0.00  
TOP. DÜZENLE. GİRMEYEN: 0.00  
TOP. DÜZENLEMeye GİREN: 8747.33

MAL SAHİPLERİ ARAŞTIRMA  
VE  
ÖZET FORMU  
( KADASTRO PARSELİNE SIRALI )

SAYFA NO: 4

TOPLAM ADA ALANI : 6889.92  
O.KATILIM ORANI : 0.0000000  
D.O.PAYI ORANI : 0.2123402

**EMİN ALP**  
Harita ve Kadastro Mühürü  
Öğrenci No: 6507  
Diploma No: 96-CAAF-15  
Bartın V.D. No: 20000034708



TOPLAM ALAN : 8611.21	MAL SAHİPLERİ ARAŞTIRMA VE ÖZET FORMU ( KADASTRO PARSELİNE SIRALI )	TOPLAM ADA ALANI :
TOPLAM PAY : 8611.21		O.KATILIM ORANI :
TOPLAM KAMULAŞTIRMA : 0.00		D.O.PAYI ORANI :
TOP. DÜZENLE. GİRMEYEN: 0.00		
TOP. DÜZENLEMeye GİREN: 8747.33		

K A D A S T R O							İ M A R					
SNo	Pafta	Ada/Par	Aln/Pay	Hisse	Malik/Baba Adı	Kamu	Dop/İth	Ada/Par	Alan	Hisse	Pay	Eksik aldığı Alan
45	E28C03B1B	329/18	1233.70 52.13	60 1420	ÇİĞDEM ÖZTÜRK NURETİN	-	11.07 41.06	329/57	1141.81	4825/114181	48.25	-
46	E28C03B1B	329/18	1233.70 56.47	65 1420	ÖZDEN EMİR MUSTAFA	-	12.00 44.47	329/57	1141.81	5227/114181	52.27	-
47	E28C03B1B	329/18	1233.70 52.13	60 1420	FATMA ATASOY İSMAİL	-	11.07 41.06	329/57	1141.81	4825/114181	48.25	-
48	E28C03B1B	329/18	1233.70 56.47	65 1420	NURDAGÜL ŞEN MUHARREM	-	12.00 44.47	329/57	1141.81	5227/114181	52.27	-
49	E28C03B1B	329/18	1233.70 52.13	60 1420	KAMURAN KABADAYI NECATİ	-	11.07 41.06	329/57	1141.81	4825/114181	48.25	-
50	E28C03B1B	329/19	664.12 664.12	TAM	KARDEMİR DEMİR ÇELİK SAN.VE TIC.A.Ş.	-	141.02 523.10	329/58	612.88	50256/61288	502.56	20.54
51	E28C03B1B	329/20	657.55 657.55	TAM	KARDEMİR DEMİR ÇELİK SAN.VE TIC.A.Ş.	-	139.62 517.93	329/58 329/60	612.88 387.27	11032/61288 TAM	110.32 387.27	20.34
52	E28C03B1B	329/21	1131.49 188.57	64 384	AHMET ÇEKİCİ MEHMET	-	40.04 148.53	329/59	856.24	14271/85624	142.71	5.82
53	E28C03B1B	329/21	1131.49 188.58	64 384	MAKBULE HASAN	-	40.04 148.54	329/59	856.24	14271/85624	142.71	5.83
54	E28C03B1B	329/21	1131.49 47.15	16 384	ZELİHA HİKMET İBRAHİM	-	10.01 37.14	329/59	856.24	3568/85624	35.68	1.46
55	E28C03B1B	329/21	1131.49 47.15	16 384	EMİNE NİGAR İBRAHİM	-	10.01 37.14	329/59	856.24	3568/85624	35.68	1.46
56	E28C03B1B	329/21	1131.49	16	FATMA NURİYE	-	10.01	329/59	856.24	3568/85624	35.68	1.46

**Sinan ALP**  
 Harita ve Kadastro Mühendisi  
 Odası No: 5507  
 Diploma No: 95-CAAF-15  
 Bartın V.D. No: 20030634788



K A D A S T R O		İ M A R											
SNo	Pafta	Ada/Par	Alan	Hisse	Malik/Baba Adı	Kamu	Dop/İTh	Ada/Par	Alan	Hisse	Pay	Rayıç	A/B
18		329/14	1189.26	7/108	FEHMİ DERİŞ	-	18.24			6904/106525	69.04	18000.00	-24911.67
19		329/14	1189.26	7/108	SÜLEYMAN SAMİ	-	67.66			6904/106525	69.04	18000.00	-24911.67
20		329/14	1189.26	6/108	REYHAN ÇAKAR	-	18.24			5918/106525	59.18	18000.00	-21250.00
				66.07	RIFAT	-	67.66						
					CEVDET ESENYURT	-	15.64						
					DURSUN	-	58.00						
24	E28C0381B	329/18	1233.70	65/1420	HANIM AYSAY	-	11.99	329/57	1141.81	5227/114181	52.27	18000.00	-140147.11
25		329/18	1233.70	35/1420	NEVZAT	-	44.48			2814/114181	28.14	18000.00	-75297.68
26		329/18	1233.70	35/1420	UMUT GÜLER	-	6.46			2814/114181	28.14	18000.00	-75297.68
27		329/18	1233.70	65/1420	MEHMET	-	23.95			5227/114181	52.27	18000.00	-140147.11
28		329/18	1233.70	70/1420	GÜLCAN GÜLER	-	6.46			5629/114181	56.29	18000.00	-150775.35
29		329/18	1233.70	65/2840	RAMAZAN	-	11.99			2613/114181	26.13	18000.00	-69893.56
30		329/18	1233.70	65/2840	BANU ERMİŞ	-	6.00			2613/114181	26.13	18000.00	-69893.56
31		329/18	1233.70	70/1420	HASAN BASRİ	-	22.24			5629/114181	56.29	18000.00	-150775.35
32		329/18	1233.70	65/1420	SEMİRA BALTAÇI	-	12.91			5227/114181	52.27	18000.00	-140147.11
33		329/18	1233.70	70/1420	HÜSEYİN	-	47.90			5629/114181	56.29	18000.00	-150775.35
34		329/18	1233.70	65/1420	HÜSEYİN	-	11.99			5227/114181	52.27	18000.00	-140147.11
35		329/18	1233.70	35/1420	CÜNEYT KARACA	-	44.48			5629/114181	56.29	18000.00	-150775.35
36		329/18	1233.70	35/1420	CEMİL	-	12.91			2814/114181	28.14	18000.00	-75297.68
37		329/18	1233.70	65/1420	MELAHAT TUNCAI	-	47.90			2814/114181	28.14	18000.00	-75297.68
					İSMAIL	-	11.99			5227/114181	52.27	18000.00	-140147.11
					ENGİN UZUN	-	11.99			5227/114181	52.27	18000.00	-140147.11
					ALAEDDİN	-	44.48			2814/114181	28.14	18000.00	-75297.68
					MUSTAFA KAZANCI	-	6.46			2814/114181	28.14	18000.00	-75297.68
					YALÇIN	-	23.95			5227/114181	52.27	18000.00	-140327.11
					ELİF KAZANCI	-	6.46						
					BAHTİYAR	-	23.95						
					GÖKHANTUŞ	-	11.99						

Sinan ALI  
Harita ve Kadastro Mühendisi  
Oda Sicil No: 95-07  
Diploma No: 95-CAAF-15  
Lisans V.D. No: 26039034788

SAYFA NO: 2

TOPLAM ALAN : 8611.21  
TOPLAM PAY : 8611.21  
TOPLAM KAMULAŞTIRMA : 0.00  
TOP. DÜZENLE GİRMEYEN: 0.00  
TOP. DÜZENLEMeye GİREN: 8747.33

TESCİLE ESAS  
DAĞITIM CETVELİ  
( İMAR PARSELİNE SIRA LI )

TOPLAM ADA ALANI : 6889.92  
O.KATILIM ORANI : 0.0000000  
D.O.PAYI ORANI : 0.2123402

K A D A S T R O			İ M A R										
SNo	Pafta	Ada/Par	Alan	Hisse	Malik/Baba Adı	Kamu	Dop/İth	Ada/Par	Alan	Hisse	Pay	Rayiç	A/B
38		329/18	1233.70	56.47 55/2840	YAKUP SANIYE SARI	-	44.48 5.07			2211/114181	22.11	18000.00	-59445.32
39		329/18	1233.70	23.89 55/2840	YAŞAR MAHSUN BAYRAK	-	18.82 5.07			2211/114181	22.11	18000.00	-59445.32
40		329/18	1233.70	65/1420	RAMAZAN SEDA YENİ ZOR	-	11.99			5227/114181	52.27	18000.00	-140327.11
41		329/18	1233.70	56.47 60/1420	HÜSEYİN ZEYNEP GÜRPINAR	-	44.48 11.07			4825/114181	48.25	18000.00	-129338.87
42		329/18	1233.70	52.13 65/1420	AHMET ZÜLALİ ÖZTÜRK	-	41.06 11.99			5227/114181	52.27	18000.00	-140327.11
43		329/18	1233.70	56.47 60/1420	MURAT ALİ EKBER DOĞAN	-	44.48 11.07			4825/114181	48.25	18000.00	-129338.87
44		329/18	1233.70	52.13 65/1420	HÜSEYİN AHMET BULUT	-	41.06 11.99			5227/114181	52.27	18000.00	-140327.11
45		329/18	1233.70	56.47 60/1420	KAZIM ÇİĞDEM ÖZTÜRK	-	44.48 11.07			4825/114181	48.25	18000.00	-129338.87
46		329/18	1233.70	52.13 65/1420	NURETTİN ÖZDEN EMİR	-	41.06 11.99			5227/114181	52.27	18000.00	-140327.11
47		329/18	1233.70	56.47 60/1420	MUSTAFA FATMA ATASOY	-	44.48 11.07			4825/114181	48.25	18000.00	-129338.87
48		329/18	1233.70	52.13 65/1420	İSMAIL NURDAGÜL ŞEN	-	41.06 11.99			5227/114181	52.27	18000.00	-140327.11
49		329/18	1233.70	56.47 60/1420	MUHARREM KAMURAN KABADAYI	-	44.48 11.07			4825/114181	48.25	18000.00	-129338.87
50	E28C03B1B	329/19	664.12	TAM	KARDEMİR KARABÜK A.Ş	-	141.02	329/58	612.88	50256/61288	502.56	18000.00	369720.00
51		329/20	657.55	664.12 TAM 657.55	KARDEMİR KARABÜK A.Ş	-	523.10 139.62 517.93			11032/61288	110.32	18000.00	366120.00
52	E28C03B1B	329/21	1131.49	64/384	AHMET ÇEKİCİ	-	40.04	329/59	856.24	14271/85624	142.71	18000.00	104820.00
53		329/21	1131.49	188.58 64/384	MEHMET MAKBULE	-	148.54 40.04			14271/85624	142.71	18000.00	105000.00

T E S C İ L E E S A S  
D A Ğ İ T İ M C E T V E L İ  
( İ M A R P A R S E L İ N E S İ R A L I )

SAYFA NO: 3

TOPLAM ADA ALANI : 6889.92  
O.KATILIM ORANI : 0.0000000  
D.O.PAYI ORANI : 0.2123402

TOPLAM ALAN : 8611.21  
TOPLAM PAY : 8611.21  
TOPLAM KAMULAŞTIRMA : 0.00  
TOP. DÜZENLE. GİRMEYEN: 0.00  
TOP. DÜZENLEMEYE GİREN: 8747.33

**Sinan ALP**  
Harita ve Kadastro Mühendis  
Oda Sicil No: 5607  
Diploma No: 95-044F-15  
Cartur V.D. No: 20090034700

K A D A S T R O				İ M A R									
SNo	Pafta	Ada/Par	Alan	Hisse	Malik/Baba Adı	Kamu	Dop/İth	Ada/Par	Alan	Hisse	Pay	Rayiç	A/B
54		329/21	1131.49	188.58 16/384	HASAN ZELİHA HİKMET	-	148.54 10.01			3568/85624	35.68	18000.00	26340.00
55		329/21	1131.49	47.15 16/384	İBRAHİM EMİNE NİGAR	-	37.13 10.01			3568/85624	35.68	18000.00	26340.00
56		329/21	1131.49	47.15 16/384	İBRAHİM FATMA NURİYE	-	37.13 10.01			3568/85624	35.68	18000.00	26340.00
57		329/21	1131.49	47.15 16/384	İBRAHİM HASAN RIZA	-	37.13 10.01			3568/85624	35.68	18000.00	26160.00
58		329/21	1131.49	1/2 565.75	KARDEMİR KARABÜK A.Ş.	-	120.13 445.61			42812/85624	428.12	18000.00	314820.00
51	E28C03B1B	329/20	657.55	TAM 657.55	KARDEMİR KARABÜK A.Ş.	-	139.62 517.93	329/60	387.27	TAM	387.27	18000.00	366120.00
23	E28C03B1B	329/17	1853.74	TAM 1853.74	HAYRETTİN İŞIKALTIN SELAHATTİN	-	393.62 1460.12	329/61	1402.78	TAM	1402.78	18000.00	1031940.00
22	E28C03B1B	329/16	988.14	TAM 988.14	GÖNÜL BIÇAKCI COŞKUN ÖMER DEMİR [Vrs.] COŞKUN NİHAL ERGÜDEN [Vrs.] MUSTAFA	-	209.82 778.32	329/62	747.76	TAM	747.76	18000.00	550080.00
21	E28C03B1B	329/15	893.21	TAM 893.21	SAVAŞ İPEK SELAMİ	-	189.66 703.55	329/63	675.93	TAM	675.93	18000.00	497160.00

TESCİLE ESAS  
DAĞITIM CETVELİ  
( İMAR PARSELİNE SIRALI )

SAYFA NO: 4

TOPLAM ADA ALANI : 6889.92  
O.KATILIM ORANI : 0.0000000  
D.O.PAYI ORANI : 0.2123402

**BİNEN ALP\***  
İmar ve Kadastro Mühendisi  
Oda Sicil No: 5507  
Diyadinin No: 44-CAAF-15  
Zamın V.D. No: 26039634788





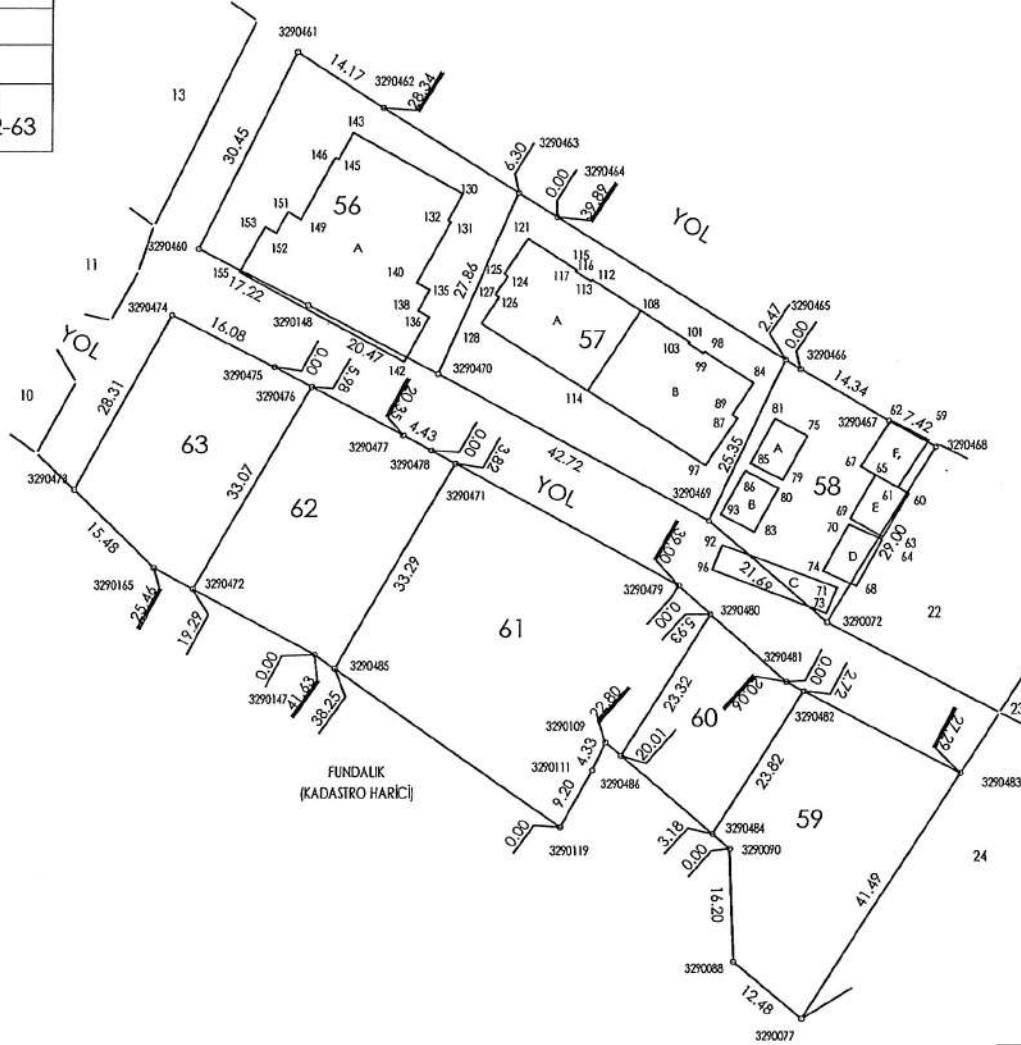






# ROLEVE OLÇU KROKISI

İLİ	: BARTIN
İLÇESİ	AMASRA
MAH./KÖY	: KUM
ADA/PARSEL NO	: 329/56-57 58-59-60-61-62-63



NoktaNo	Y	X	MH
3290059	449096.00	4623370.82	0
3290060	449093.24	4623363.23	0
3290061	449091.75	4623364.07	0
3290062	449090.79	4623373.59	0
3290063	449089.73	4623357.01	0
3290064	449089.67	4623356.67	0
3290065	449088.68	4623365.80	0
3290067	449086.66	4623367.01	0
3290068	449086.11	4623350.10	0
3290069	449085.17	4623359.59	0
3290070	449084.98	4623358.75	0
3290071	449083.42	4623349.91	0
3290072	449082.01	4623345.07	0
3290073	449081.90	4623346.31	0
3290074	449081.42	4623352.18	0
3290075	449079.20	4623371.32	0
3290077	449078.51	4623288.92	0
3290079	449075.80	4623365.04	0
3290080	449075.20	4623363.85	0
3290081	449074.74	4623373.78	0
3290083	449071.84	4623357.62	0
3290084	449071.73	4623378.91	0
3290085	449071.30	4623367.37	0
3290086	449070.55	4623366.35	0
3290087	449069.49	4623373.79	0
3290088	449069.01	4623297.01	0
3290089	449068.78	4623374.32	0
3290090	449068.52	4623313.20	0
3290092	449067.44	4623355.82	0
3290093	449067.20	4623360.12	0
3290096	449066.11	4623352.30	0
3290097	449065.09	4623367.06	0
3290098	449064.92	4623383.37	0
3290099	449064.73	4623383.17	0
3290101	449062.87	4623384.71	0
3290103	449062.68	4623384.50	0
3290108	449056.11	4623389.14	0
3290109	449051.36	4623328.21	0
3290111	449049.56	4623324.27	0
3290112	449049.40	4623393.53	0
3290113	449049.26	4623393.31	0
3290114	449048.88	4623377.66	0
3290115	449047.32	4623394.89	0
3290116	449047.30	4623394.86	0
3290117	449047.16	4623394.64	0
3290119	449045.16	4623316.19	0
3290121	449040.60	4623399.29	0
3290124	449037.80	4623393.96	0
3290125	449037.36	4623394.34	0
3290126	449036.66	4623390.98	0
3290127	449036.15	4623391.43	0
3290128	449034.19	4623387.27	0
3290130	449031.54	4623405.52	0
3290131	449029.95	4623401.61	0
3290132	449029.54	4623401.83	0
3290135	449027.07	4623392.07	0
3290136	449027.03	4623388.16	0
3290138	449025.48	4623389.07	0
3290140	449025.27	4623393.04	0
3290142	449023.55	4623381.81	0
3290143	449016.40	4623413.91	0
3290145	449014.41	4623410.26	0
3290146	449013.95	4623410.47	0

UYGUNDUR BELEDİYE/ÖZEL İDARE/PROJE İDARESİ	
KONTROL EDEN	ONAYLAYAN

DÜZENLEYEN	
ADI SOYADI	<b>Sinan ALI*</b> Harita ve Kadastro Mühendisi
TARİH	05.08.2007 Pazantı No: 05.05.0000-10
İMZA	Barın V/D No: 26039634788